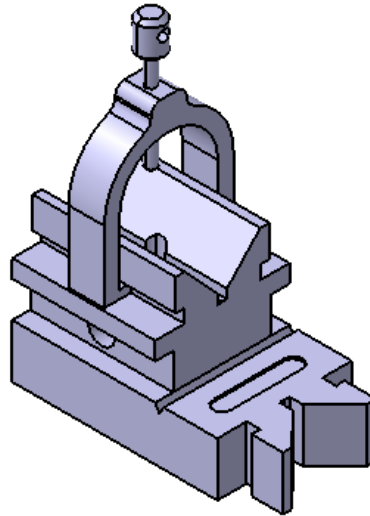
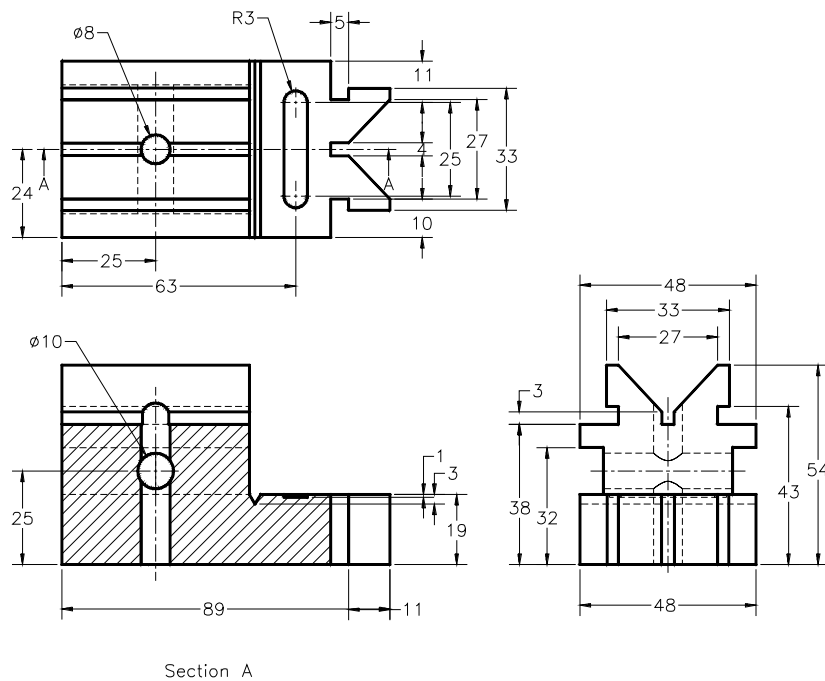


## V-Block Assembly

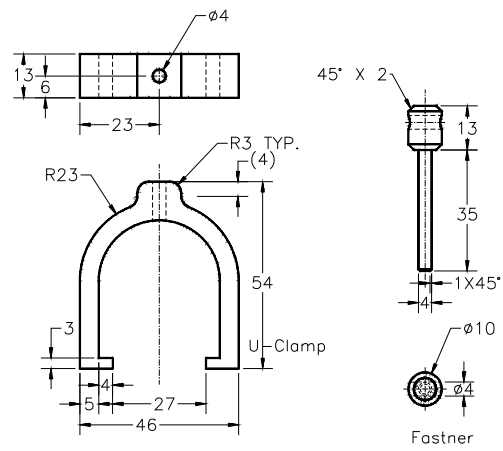
Create all the components of the V-Block assembly and then assemble them, as shown in Figure 1. The dimensions of the components are shown in Figures 2 and 2.



**Figure 1** The V-Block assembly



**Figure 2** Views and dimensions of the V-Block body



**Figure 3** Views and dimensions of the U-Clamp and Fastener